



Design *in Ticino* *à la carte*

Live me.



Design
in Ticino
à la carte

Podium live
the design,
the attention to detail,
the innovation,
the functionality,
the durability,
the sustainability in terms of the environment,
the way it is made,
space-saving projects,
the functionality,
the high quality.
the pluses that have set us apart for 40 years

Live me,

Places from which inspiration was born.



Foreword

by Adelheid Bernasconi

"For me, furnishing our own home, our own little world, is a rewarding pleasure, but it also represents the quest for a more profound existence, regardless of whether it is a minimalist construction, a period townhouse, a loft or a commercial building. To capture the dynamic tension of each habitat is an exciting task that is simultaneously full of promise and potential. To accept such a challenge is essentially idealistic but it also has considerable appeal: the job of an interior designer is to apply their greatest skills in empathizing with another person's journey in life. In doing so they slowly glean various unique and profound elements and characteristics, identify with them and meet each individual's needs whilst placing the right amount of emphasis on the setting and balancing practical functionality with aesthetic qualities. A relationship of mutual trust forms during this journey to create the dream home.

The designer works in complete harmony with the customer, peeling back the layers to their secret and deepest desires, as they take them by the hand until the home they want materializes. Understanding the tastes and needs of the homeowner requires a high degree of sensitivity and empathy,

as does discerning their imagination, goals, priorities and wishes. Clarity, transparency and information form the primary vehicles for this process. That is why every house is a reflection of its owner's personality. With this achieved, the designer has to translate these ideas onto paper as drawings and projects, against a consistent backdrop of continuous juxtapositions and open dialog: the designer's ability lies in being able to always find the best solution in terms of originality, practicality and aesthetics. Revolutionizing the interior of our home, turning what was once a traditional townhouse into a contemporary and modern setting, together with our desire to be able to live in a space that was simultaneously minimalist and suggestive, warm and full of life, really pushed us to our limits: a challenging task, but ultimately, completely rewarding. I hope through this book to have successfully conveyed the message we have tried to illustrate of the demanding yet satisfying journey of creating an environment not borne of stuffy and static elements, but rather a living and dynamic entity that can grow together with us."





Live me,

Out of all the rooms in a house, the kitchen is the most complex and fascinating.

It is the heart of the home, where we cook and socialize. It brings together elements such as fire and water, and is enriched by high-performing materials with advanced technologies.

Podium's approach to this project combines technical precision with the functionality and innovation of shapes with spaces to produce not just the necessary furnishings, but to breathe new life into spatial concepts where we cook and live.

Because it is precisely your needs that form the springboard of our project for your home.



Ticino *cuisine.*

Kohlrabi carpaccio with pepper from the Valle Maggia

1 kohlrabi
1 small piece of cheese
San Gottardo – Agroval, Airolo
pepper from the Valle Maggia
1 head of red chicory
fresh mint
champignon mushrooms
(either porcini or ovuli)
balsamic vinegar, as needed
Extra Vecchio Delea, Losone
oil (del Ceresio, Tamborini),
Lamone, as needed
salt “Selection Luca Merlo”

Remove the leaves from the kohlrabi and cut it into very thin slices, with a slicer if you have one. Wash the red chicory, let it dry, and cut it into thin strips (or keep as leaves). Cut the cheese into thin slices, with the appropriate utensil or a potato peeler. Clean the mushrooms and cut them into slices. Make the vinaigrette with oil, salt, and balsamic vinegar. Prepare a bed of red chicory on a plate, place the slices of kohlrabi on top, and add the slices of San Gottardo Agroval cheese and the sliced mushrooms. Season with a spoonful of vinaigrette. Drizzle a few drops of balsamic vinegar on the cheese slices. Add Valle Maggia pepper to taste.



Live me,
*Essential
Living*



Essential Living

The new kitchen project that unifies all functions of the living space.

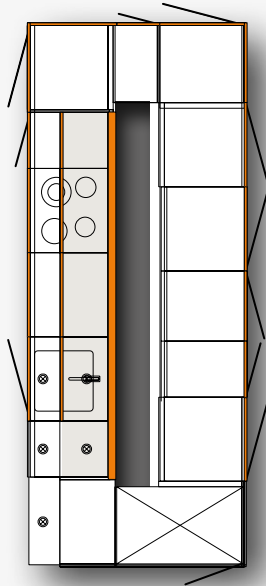
Project
1

Cabinet
Living area
Table
Countertop
Storage space



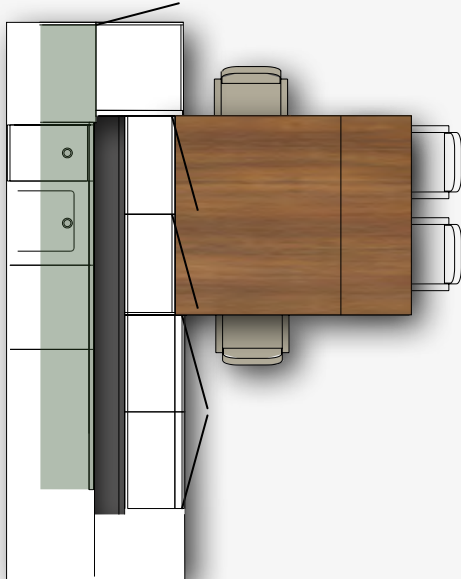
Cooking area

Project
1



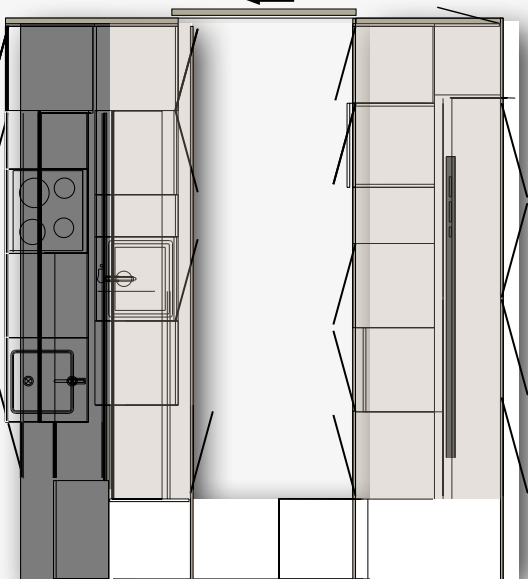
This wall contains the kitchen and, at the back, a cupboard for everything necessary. In this figure, the wall separates the entry and cooking area.

Project
2



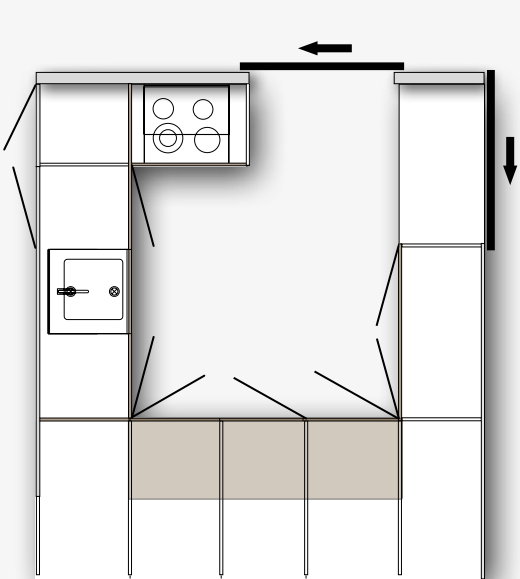
The kitchen, living, and dining areas are integrated into a single block. And "Essential Living" makes this possible.

Project
3



A space that encompasses any area: from storage space and pantry to laundry and wine cellar.

Project
4



This operational kitchen studio was developed for the "Essential Living" project. Here, it forms the center of an expansive space that offers room for all other living areas: the entrance, parlor, bedroom, and dining area. The functional areas can be opened or closed as desired with two sliding doors.



2

It's not only the way we live and work that is subject to change - technologies for the modern kitchen are also constantly being developed. While there is a trend in all international metropolises to reduce the living area in houses and apartment buildings, one thing continues to stay the same: the desire to share and maintain

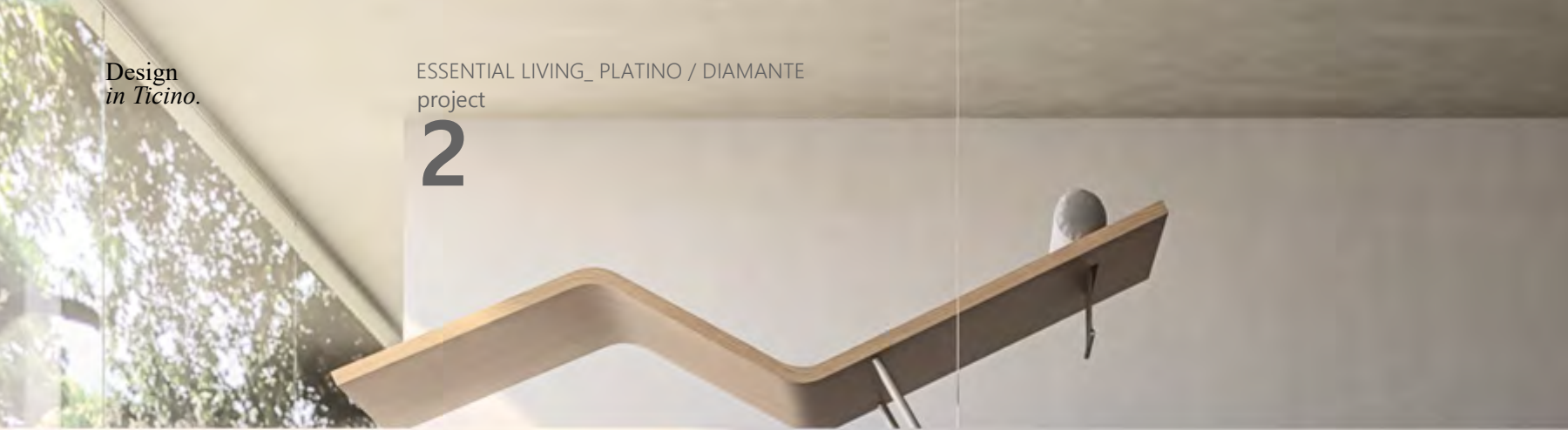
communal eating rituals. Nowadays, we have very little time for cooking. Foodies who don't want to miss out on the joy of eating and want to be prepared for surprise visitors trust in the new concept of cooking simple meals. The design adapts to new lifestyle habits.

When the kitchen is not being used, it quickly disappears behind an architectural wall that is very easy to open and close. Nor is there anything lacking: neither electrical appliances nor comfort.



2





Facilities in the kitchen and cabinet block are available in all variations and different designs: from the simplest design that separates the living and cooking area to a version that separates the working area from the living and kitchen area and offers a dining or office table on the parlor side.



Live me,
Essential Living







3

A glance into the kitchen, located between the living and dining areas, shows that this indispensable space has been created to keep everything in order.

That is the secret in every house. This essential kitchen element can be designed individually, either small or large, with the option of a storage space where you can keep

everything that would be lying around otherwise. Even if you do not choose the comprehensive "Essential Living" solution, it is easy to create a perfectly concealed space.

Whether it is a storage area or a workspace where a laundry room can be integrated, nothing will get in the way of your tidy home.

Live me, *Essential Living*



3

The interior of the living cabinet complex offers additional space for a second sink, storage space for the ironing surface in the laundry room or additional electrical devices like a wine cooler, and much more. We offer a custom solution for every customer need.



4





This version shows the “Essential Living” concept in a different design. In this case, it is completely isolated from the remaining living area. The kitchen with all its functions and the open breakfast or worktable are situated in the middle of the room. It can be accessed via sliding doors. The cube offers intelligent kitchen appliances on the inside and brings

the working area of the kitchen to center stage. Two large sliding doors close off the room. They provide an open view of the living area and visible shelves are attached for cooking utensils or books. Depending on how far you open or close the doors, the appearance of the entire room changes.



Live me,
Essential Living

4



The interior is refined with a light maple wood veneer. The cabinet part supported by white high gloss steel beams brings out the features while the outer part stands out with ceramics that feature a marble look. "Essential Living" is planned and implemented exactly according to the personal wishes and ideas of the homeowner or interior architect.



Ticino *cuisine.*

Quinoa cookies

Ingredients:

75 g quinoa
150 ml milk
1 tsp. vanilla essence
1 egg
100 g cane sugar
20 ml seed oil
180 g flour
50 g chocolate chips

Rinse the quinoa multiple times, then put it into a pan with the milk, 1 teaspoon of sugar and vanilla. Once the quinoa is heated, let it boil for 10 minutes until it has fully soaked up the milk. Place the quinoa into a bowl, let cool, then loosen with a fork. Add the egg, seed oil, and the sugar. Knead everything until a firm, homogeneous dough has been formed. Next, add just the chocolate pieces, kneading them lightly into the mixture to keep the pieces whole. Form balls, place them on baking paper, and put them into the oven. Bake the quinoa cookies in the oven at 180° Celsius for 20 minutes. Serve warm.

Live me,
Loft





People who want to live unconventionally but have minimal space must expand the limitations of their own power of imagination and fully unleash their fantasy. After all, who wants to live without comfort? Podium Industries has redesigned the loft so that you have everything you need on two floors. The full-height windows and the absence of partitions make the room a duplex as well as

bright and visually more spacious. “The homeowners are often creative, dynamic people themselves. They want to build a house that is completely tailored to their own tastes.” This results in a loft with an ambiance that hints at the social nature of its inhabitants. The furnishings are consciously designed according to their ideas and material preferences. This kitchen has a white bookshelf, a

gray-white wall, and a ceiling made from baseboards. Neutral, cool tones dominate the kitchen, such as the hand-made tabletop made from rippled solid wood, the beige-gray wall units with folding doors, and the anthracite base cabinets. The colored back wall has a steel-gray metallic look and is jazzed up with a grouting technique.



The dining tabletop consists of a mosaic of small wood fronts in different colors of wood. It is a true masterpiece of craftsmanship. The bed behind the sideboard has pullouts, offers storage space, and divides the relaxation area from the living area of the loft.

For Podium Industries, tailored production means underscoring the personal touch of the people who live there and also manufacturing high-quality and ecological products that you can enjoy for a long time.

Live me,
Loft





Folding doors for the wall units in the section allow for absolute freedom of movement, are very practical, and can also remain open while cooking and handling kitchen items. This technology guarantees soft and quiet closing, whether mechanically or electrically. Further exclusive interior fittings make the podium kitchen unique.





Ticino *cuisine.*

Salmon in red wine sauce

Ingredients:

4 salmon fillets, about 180 g
500 ml red wine
8 sprigs of thyme
2 small heads of broccoli
60 g butter

Remove the skin of the salmon fillets, wash broccoli, and separate it into florets. Bring the wine to a boil with the thyme in a large pot at medium heat.

Reduce the heat, add the salmon, lightly salt, and cover.

Cook the fish thoroughly for about 10 minutes and moisten from time to time with the liquid. Then take the salmon out of the pan with a perforated ladle and keep warm.

Turn up the heat to the maximum and quickly let the wine sauce reduce down to about 100 ml.

The sauce should thicken slightly.

In the meantime, bring a large pot of water to boil.

Add broccoli and cook for 3 minutes.

Drain and spread evenly on four serving plates together with the salmon. Pour the sauce over the salmon and serve hot.

Live me,
Onda





One of the elements that Podium live focuses on is “curved lines”. This is a solution that takes up the form of the elements and breaks classic parallel lines. The curved line layout gives the environment of this unique item a soft touch. It changes the perspective of the kitchen design and detaches us from the tendency to think in modules rather than products. Products have properties

and potential, which are often not expressed sufficiently in a simple module. Aside from aesthetic qualities, curves also have real functions. For example, a kitchen with an arched pantry or an integrated washing or drying space offers additional dimensions. It also provides perfect ergonomics and makes an otherwise simple flat wall optically appealing and harmonious.

These values are also reflected in the sink unit, which is adapted to the design of the worktop, creating this unique, highly customized island with a personal touch.

- 1 pullout pantry
- 2 doors bent to fit
- 3 anthracite countertop from DEKTON® with marble design, 100% hygienic, ecological, and non-absorbent



Live me, *Onda*



1



Equipped drawers and unique solutions are available for household appliances in a wide range and various qualities. They are integrated into the Podium kitchen according to the customers' personal taste and needs.

- 1 Drawer insert from solid beech wood for cooking utensils. Customized solution, exactly according to the template and coordinated with the private collection.
- 2 Corner solutions like Magic Corner or Lemans with shelves, open compartments, glass holders.
- 3 Stainless steel sink integrated into the countertop.
- 4 Extractor hood made from steel and black glass, flush-mounted.
- 5 Gaggenau Teppanyaki grill.
- 6 Drawer insert for bottles.



2



2



4



2



2



4



3



5



6





The "Onda" project adapts to rooms with extraordinary dimensions. It is perfectly made to measure, just as you would expect from Podium live. Front color: Champagne beige with a metallic effect. The shining extractor hood disappears into the curved island at the touch of a button. It is a unique object in any new room situation. In this case, the pantry in the picture is located in the connection angle between the tall cabinets and bases. It also offers ideal storage for food supplies. The special lighting of the ceiling suspended from steel beams traces the countertop island in waveform and extends to a round breakfast table, which is a unique, one-of-a-kind piece.

Ticino *cuisine.*

Bülbora (pumpkin soup)

popular recipe from
Lugano Campagna.

Ingredients:

1 kg fresh pumpkin
1 l milk
1 tsp. white flour
1 small piece of butter
2 handfuls of rice
some salt

Remove the pumpkin seeds and strings and cut the pumpkin into pieces. Cook for 15 minutes in lightly salted water.

Drain and crush until it is mashed. Put the mashed pumpkin into a pot with the milk. Bring to a boil and add flour. Cook for 15 minutes, stirring slowly. Add rice and let cook for another 15 minutes. Add butter and stir before serving. Add fresh mushrooms or smoked meat as a garnish, if desired.

Live me,
Scala









The lack of handles is the feature that underscores the minimalistic style in this kitchen the most. The "push" elements are recessed into the top or side of the front of the cabinet or, for optimum grip comfort, incorporated into the cabinet body as a traditionally manufactured strip. They are ideal design elements for base, wall, and tall cabinets. They can be made from the

same color or material as the cabinets or highlighted with a contrast color. In this case, the gold leaf design was selected for the surface. The 1.5 mm thick acrylic front is applied to the front plates in a highly sensitive, technological production process. The black glossy, metalized acrylic fronts in the kitchen base round off the kitchen of this 19th-century villa.

Live me,
Scala



Ticino *cuisine.*

Trout fillets in tomatoes
and jus d'orange

Ingredients:

4 trout fillets

1 orange

1 can of tomatoes

1 garlic clove

1 onion

some flour

Coat fish fillets in flour
then fry them for
1 minute on each side
and keep them warm. In
the meantime, prepare
the sauce with tomatoes,
onions, garlic, and orange
juice. Serve the fillets
together with the sauce.



Live me,
Hi-Macs®





HI-MACS® is an unusual three-dimensional effect and extraordinarily fine material. It consists of acrylic, minerals, and natural pigments that come together to provide a smooth, non-porous, thermoformable, and seamless surface. HI-MACS® fulfills the highest quality standards: It saves resources during production and stands out with its functionality and hygiene. Structural properties: With its versatility,

this material offers countless advantages compared to conventional materials. Podium dares to work with this material and forms and transforms it into innovative furniture, bath, or kitchen furnishings. The kitchen shown stands out in particular due to its special 45-degree front angle, but also due to its elevated base that has pullouts for using the storage space for children's toys or decorative materials. This gives the kitchen a floating and

high-quality appearance. Using this material, an entire countertop can be produced perfectly and seamlessly finished, including a recessed sink and accessories. The result is overwhelming and unique and the breakfast bar that can be pulled in and out electrically is just one of the many features.







The breakfast bar glides forwards without any resistance by simply pressing the electric control button. It can be used for various purposes and transformed from a sideboard into a table or a breakfast bar. When opened, it offers space for bar stools. The glass window lets you talk to the cook and keep an eye on everything.

Ticino *cuisine.*

Rice and Luganighetta

Ingredients:

1 chopped onion
40 g butter or olive oil
320 g rice (Terreni alla Maggia)
2 Luganighetta sausages
1 finely chopped garlic
1 glass of Merlot
("tre terre" Vinicola Chiodi)
1 l beef stock
160 g diced Alp cheese
(or grated Sbrinz cheese)
4 Robiolino lati cheese
or 100 g butter

Quickly fry the finely chopped onion and garlic in butter until translucent. Add the peeled Luganighetta and the rice. Then pour the red wine on top. Stir and let evaporate. Add the slightly boiling broth little by little while stirring constantly. Take the rice from the stove when the rice is al dente. Only add the butter and cheese then. As desired, garnish with slices of fresh Robiolino cheese or flakes of butter.



Live me,
Stone



Nature's best and modern, robust materials dominate the style of a home. A concept in the name of a willingness to experiment and innovation: The daring combinations and the clear, convincing style are the results of continuous research. The concept reinterprets the two most important aspects in a kitchen connected to the living area – sharing experiences and continuity – in a highly exclusive manner. The use of slate stone on fabric

resin, a fiberglass countertop, and ecological plywood create a minimalist environment and everything is in harmonious balance with the outdoor living space. The material aspect of the slate and the INOX countertop fit seamlessly with the design of the island. Metal strips and profiles can be selected in different designs, qualities, and colors to ideally adapt the kitchen to the customer's personal taste, the desired atmosphere, and the surroundings.



The appearance resembles a naturally formed rock slab. Facestone has a fine and uniform grain created by metamorphic stone derived from original sedimentary rocks made up of clay and volcanic ash. The result is a sheet of natural rock with an ever-changing color due to the

various layers of stone it is made up of. A complex production procedure makes it possible for a layer of just a few millimeters of rock to be sliced off which, by being bonded with polyester and fiberglass, becomes solid and compact. Podium live: 100% natural and ecological.

Live me, Stone





PODIUM *live*

Fronts in real slate.
Edges in ALU INOX, effect-brushed. Ceramic countertop.



Ticino *cuisine.*

Gazzosa Nostrana sweet mineral water

Ingredients:

8 l water
700 g sugar
1 glass white vinegar
2 lemons
2 handfuls lime tea
1 bag black tea
3–4 twigs sage

Fill the pot with 8 l of water.
Add the lime tea, the bag of black tea, the quartered lemons, the sugar, three to four twigs of fresh sage, and then the glass of white vinegar. Cook everything together for 25 minutes and let cool down so that it can be filtered without the risk of getting burned.
Fill into glass bottles.
Caution: They must be completely clean and dry. A single drop of water would cause mold.
Place the bottles in the sun 4-5 days after filling, but not too long since they could burst otherwise.
Put them in the cellar. Open after about 5 days and check whether the liquid is gassy. You will have to wait a little longer in winter.



Live me,
Diamante







The central island composition is characterized by the fact that the countertop and tabletop meet at different heights. This integrates the curved countertop optically into the kidney-shaped breakfast table. A striking feature is the table leg, a creative and masterfully handcrafted design element that is shaped like two spread fingers supporting the tabletop - it almost seems to float. The top and bottom cupboards have high-gloss coated fronts, pullouts integrated on one side, and drawers in the kitchen area.

The lighted glass vitrine with a wine cooler can be seen from the open parlor. The countertop is made from black, hammered granite. There is space for appliances behind the island that connects directly to a countertop with a small, recessed sink where you can prepare salads and vegetables. The grip rails of the top cupboards are integrated into the lateral walls of the corpus. And the lighted back wall made from plexiglass stands out with its bamboo grass sealed on the inside.

This gives the entire living ambiance a touch of nature's best. Carefully planned, selected, and implemented details, e.g. how the line of the bar follows the line of the table make the perfect fusion of design, material, and accessories noticeable. Podium is always on the lookout for the ideal room concept to reflect the personal taste of the occupants of these spaces one-to-one and implements architectural plans to measure.



La cucina
in Ticino.

DIAMANTE

100-101



PODIUM*live*

White coated high gloss fronts.
Countertop from dark black granite, flamed and brushed.

Ticino *cuisine.*

Vegetable soup with noodles

Ingredients:

200 g butter
1 leek, cut into strips
1 celery
1 bell pepper
2 carrots, diced
1½ l vegetable broth
2 bay leaves
200 g pasta (e.g. spelt shells)
Salt and pepper, to taste
1 savoy cabbage, cut into strips
110 g cut Sbrinz cheese flakes
Parsley, finely minced

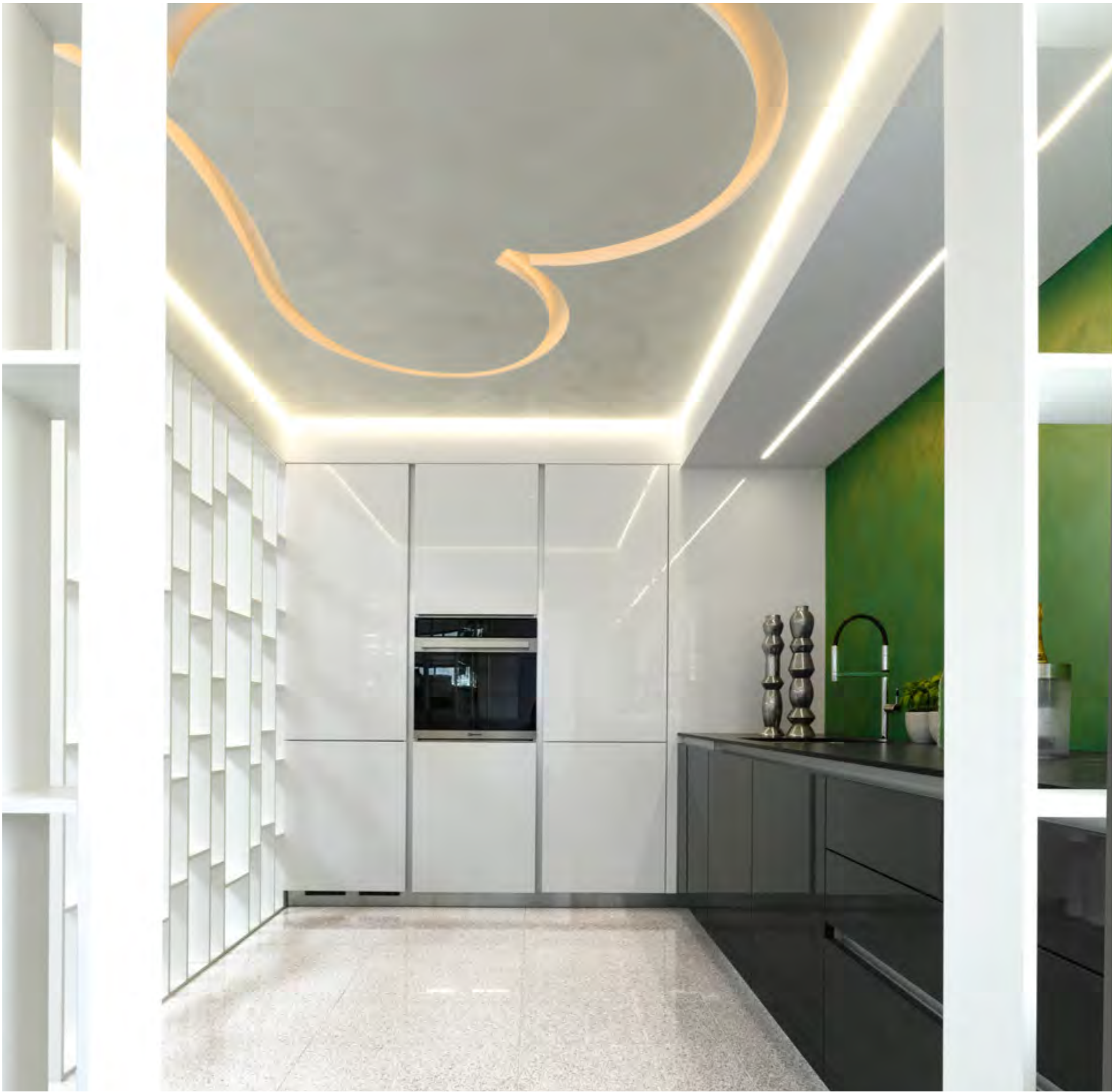
Heat butter and fry up the leek, celery, and carrots for approx. 3 minutes. Add stock and bay leaves and bring to a boil. Reduce heat but keep cooking at low heat for approx. 20 minutes. Add pasta and keep cooking for approx. 7 minutes. Add savoy and keep cooking for approx. 3 minutes. Season. Ladle the soup into the pre-warmed soup dishes. Garnish with Sbrinz cheese flakes and parsley.

Live me,
Cuore





Live me,
Cuore



PODIUM *live*

Recoated high gloss melamine fronts.
Compact laminate countertop.

The pragmatic, beautiful linearly designed kitchen fits in perfectly into a professional environment such as an office.
Its minimalist, fascinating character, fascinates young, creative people. The kitchen makes it more fun to stay at the office a little longer or to hang out in the cozy, informal break room. The room is an experience in itself. It is

full of useful elements and offers space for storing personal items, supplies, or snacks. It is shielded discretely to the outside and hides the entire kitchen on the inside.
This also makes it the centerpiece of the office at the same time and one of the best places for developing new ideas.



Ticino *cuisine.*

Fried chanterelles

Ingredients:

500 g chanterelles

1 clove of garlic

1 bunch of parsley

Salt and pepper

Thoroughly wash mushrooms under running water. Let drip and cut into irregular pieces.

Fry the garlic in a pan, add the mushrooms, and let boil for about 20 minutes. Add salt and pepper. Finally, sprinkle with freshly chopped parsley and serve immediately. This lets the parsley stay fresh, green, and appetizing.

Live me,
Eco







Since in our environment everything is interwoven and interdependent, important principles should be given the greatest respect in daily life. Resource-saving manufacturing and processing of ecological materials are key issues for Podium live. We adhere to this approach consistently in all steps, all the way up to the traditional production method, and it shows. This topic is also gaining in importance for homeowners of all generations. For this reason, these essential issues take on a key role in the offerings of Podium live.

For ecological kitchens, the focus is on the following criteria: minimum use of raw materials, recyclability of the materials, using wood from certified forests, using water-based colors, non-toxic elements, no or minimal formaldehyde emission, and devices with low energy consumption. Podium is aware of its responsibility towards society and the environment. All of the above criteria are met in this kitchen unit with island, which uses recycled aluminum and glass display cases, in which the corpus walls are optionally manufactured with plywood on the inside.





Details of the front profiles of drawers and doors. The profile is available in different designs: either in a contrast color or in the colors of the fronts. The interior of the drawers is fitted with wooden separator trays for silverware and kitchen utensils.

The solution with the inside drawer and bread cutting container is also practical. This keeps both the bread and the crumbs inside the container. The interior space can be adapted without interrupting the line of the facade.



Ticino

cuisine.

Polenta Taragna

Ingredients:

480 g Polenta Taragna

(gluten-free)

15 g butter

100 g grated Sorescia alp cheese

2 l hot water or meat stock

Place a pan with a wide bottom onto the stove and cover it.

Boil and salt the water.

Once it starts to boil, take it off of the stove and stir in the polenta with a whisk while making sure that no clumps are formed. Turn back up to high heat until the polenta starts boiling again.

As soon as small bubbles start to form after a while, cover it with the lid and keep simmering for at least 45-60 minutes.

Then add the grated cheese, stir, and wait for a few minutes.

You can also let the polenta cook for a little longer for a more intense flavor.

Should the consistency be too firm, add boiling water accordingly.

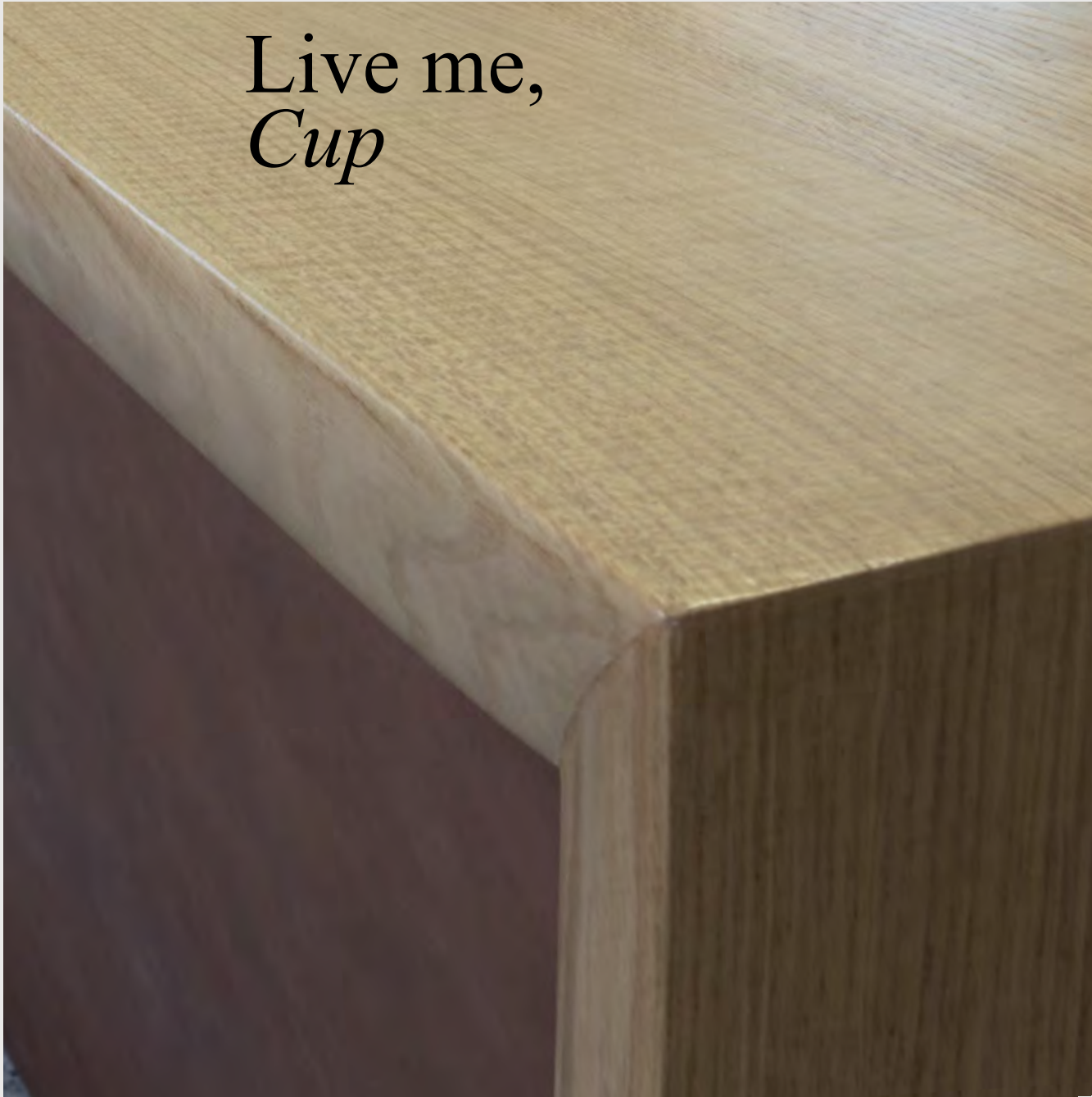
Live me,
Cup



Space that is not used as a private living area but for professional purposes requires tailored furnishing concepts that take all individual needs into account. Solid wood was used for this CUP project, a cellar vault with a bar used as a party venue. Podium Industries has created a competent, flexible specialist department that focuses on extraordinary projects and special customer wishes with the highest degree of professionalism. Over 40 years of experience, specialized

industry expertise, and committed employees make it possible for Podium Industries to create unique products, covering all stages of the process, from analysis of the plans to the identification of the characteristics of a project, through to complete assembly. The Podium Industries production facility is equipped with the latest and most state-of-the-art production systems, which allows for the highest degree of flexibility: Individual orders with lower quantities can be processed and delivered just as easily as

large orders. Professional partners with extensive experience in the furniture, bath, and kitchen area are available to customers in all regions of Switzerland to offer their expertise – from planning to delivery and assembly. Podium Industries guarantees the best customer service and the highest quality even after delivery.



PODIUM *live*

Solid chestnut bar table. Back wall MDF hand-spackled with copper scrap.



TECNO-BETON concrete effect base cabinets.





The solid wood gives this kitchen an irresistible aura thanks to its natural look. It is reminiscent of an untouched space that consists of nothing but the elements taken from nature. The modern arrangement of the functional elements of the kitchen interacts wonderfully with the inviting ambiance and the antique flair that hearkens back to the last century. The concept consists of a central island and a sliding counter that completely hides the kitchen work area, which is made from a single steel plate. Once it is pulled out, it transforms into a large table that invites you to spend some quality time together.





1

- 1 integrated domestic appliances e.g. wine cooler from Gaggenau or Liebherr, double oven and steamer
- 2 double drawer
- 3 sorting shelves made from varnished wood
- 4 tray for silverware and kitchen utensils
- 5 double drawer
- 6 outlets, operating elements
- 7 stainless steel countertop, 3 mm, edge profile with a crease
- 8 front from processed floorboards, antique chestnut from a wine cellar from Piedmont.
- 9 roller shade, corpus made from stainless steel

The planning of Podium kitchens always includes PLUS products since the real beauty of the kitchen is on the inside and in the details. PLUS includes all of the elements that you do not see at first glance but that are key for a perfect final result. Roller shutters make opening the wall cabinets easy while slower hinges make the doors close more gently; drawers and inserts were tested for the maximum load. You can choose different sizes from our range. A larger selection of drawer accessories made from various materials is also available for monoblocks. This modern kitchen is simply unique: Cooking and washing the dishes become a piece of cake, all appliances are perfectly integrated, and there are endless possibilities to adapt this space to your own wishes.



2



3



4



5



6



7



8



9



9







The modular concept makes it possible to use the available space innovatively. The classic CUP kitchen revolutionizes its appearance with a series of ideas and combines a vintage look, innovation, and postmodern elements. Faceted fronts, open metal structures, and full steel countertops are three details that give this modern kitchen a cozy and at the same time exquisite ambiance.

The antique black painted fronts with an inserted facet profile emphasize the features and offer a clever contrast to the optical wall structure with an INOX base. The front countertop is made from 100% FSC-tested plywood. This version of CUP creates the independent character of a custom kitchen while meeting all requirements of a new living environment.

Live me,
Cup



*Luxury
Apartment
+ di 100 m²*

Discreteness, design,
luxurious details, and
technology.

The renovation of
a historic house
revolutionizes the concept
of traditional furniture.

*Live me,
Penthouse*



Here, in this large old house with high, renovated interiors and modern, carefully selected surfaces that enhance the architectural elements of the ancient construction, the decision was made to install an innovative kitchen. The inner part of the island bends ergonomically around the person working in the kitchen like a crescent moon, which makes it easier to use the pullout elements. This is also an ideal solution for living floors with reduced living

space and wherever you want to dine in the company of your loved ones. The new concept of the hidden kitchen is perfectly suited for all those unwilling to forgo the joy of cooking for themselves, for friends, or for guests. When it is not being used and the doors are closed, the kitchen instantly looks perfectly cleaned up and neat. As soon as you open the doors, the kitchen offers every conceivable comfort with its wall of appliances and the additional

countertop where you can prepare breakfast, for example. The doors can be opened very easily by sliding them to the side.





PODIUM *live*

Fronts with brass color coating, antique metallic effect applied by hand with a sponge.

Open and closed.
The stylistic note is striking and profits from the clear contrasts.
The golden wall turns out to be an unexpected work and storage space that can be opened completely between modules and concealed sliding doors.
When open, the kitchen unveils a wall of appliances with white and anthracite fronts made from plexiglass. Customers can choose from a matt surface with anti-fingerprint coating or a high-gloss finish.
The curved bar countertop follows the form of a kitchen island that is manufactured especially for each new project.
The Neolith® mineral material countertop connects seamlessly with the back of the nook.
Together, all of these elements form a complete, harmonious look: nothing was left to chance.



The above is an example of how to exploit this project at best.
We can insert a bookcase behind the doors that can be opened through rotation. This way, we can also conceal a service room.



PODIUM *live*

Fronts with brass color coating, antique metallic effect applied by hand with a sponge.



The details speak for themselves. They show in particular the perfection with which furniture is manufactured at Podium. These details also provide an insight into the abilities and experience used to refine the wood by bending it in such a way that this unique furniture looks exactly as desired. It's no secret: The world of wood processing has an especially pleasant smell. Visit us and experience the production of Podium Industries first hand.

Live me,
Penthouse

When the fronts of the island are open, they reveal another surprise: The doors slide open to the front and reveal a wide variety of technological solutions for the best possible arrangement of the pullout spaces. Examples include: equipped drawers, double floors, knife holders and containers that are selected according to the kitchen devices.

Ideally, the many possibilities of the Podium live collection are carefully selected and defined during planning with the architect or kitchen planner. The following pages will show you the versatile and clever ways rooms can be used.





PODIUM *live*

Library with satin coating.
Walnut sliding door made from parquet floorboards, hand scraped.

In a penthouse, the cooking, living, bathroom, and sleeping areas flow seamlessly into one another and are openly integrated into the room. The shadow-white painted bookshelves with a silk-matt structure feature a sliding door made from antique wood. Audiovisual devices are hidden behind this door. The back walls of the bookshelf can be fitted with lighting, if necessary,

which creates new color impressions. The bookshelf follows the architectural shapes of the house and emphasizes the deep nook shelves. Every single element is custom-made.

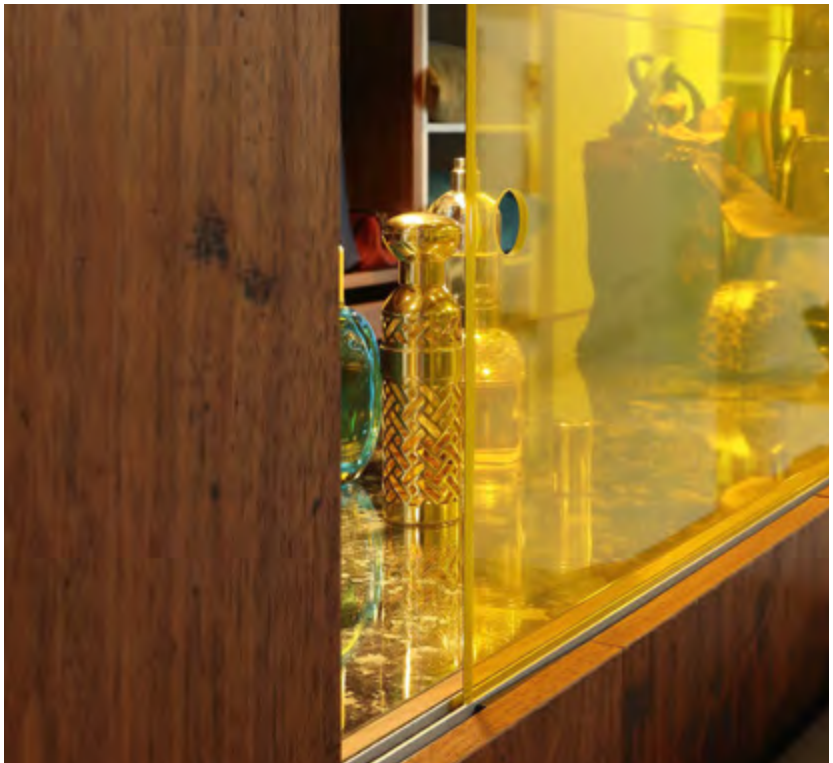






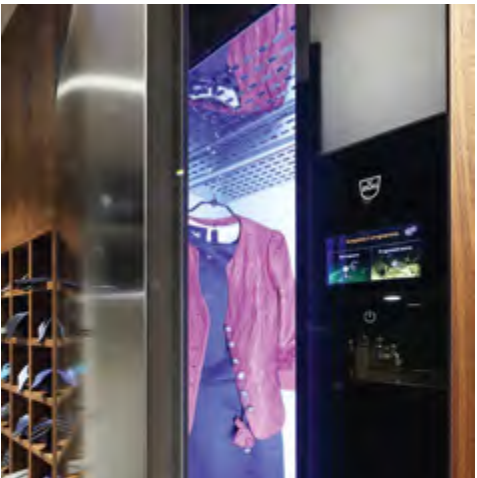
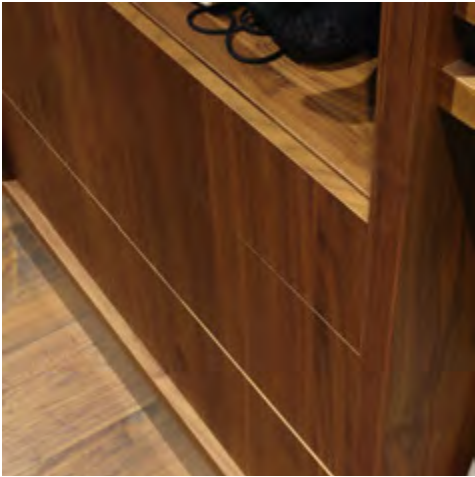
The environment of the bedroom was designed using the same approach. The wooden floorboards made from precious walnut wood are carved by hand according to a traditional production process. They were installed throughout the entire living area and were also used as fronts for the nightstands. The headboard of the bed hides the intelligently designed, space-saving, and walk-in cupboard on the back. It features traditional carpentry and craftsmanship with fronts and inserts with a walnut veneer. The recessed nook with a sliding door made from transparent colored glass offers a glimpse into the dressing room, provides space for favorite items, and above all brings lots of natural light into the back room. The smoky mirrors with an antique effect also reflect the light. Savoir faire.

Traditional carpentry- handcraft work with front panels and finishes in veneered walnut.





- 1 furnishings made from walnut veneer
- 2 wooden drawers
- 3 the nook can be accessed from the outside of the dressing room
- 4 Refresh-Butler made by Zug, a multifunctional device for freshening up clothes, shoes, etc. which is integrated into the elements of the walk-in closet.



The bright nook in the walk-in closet stands out and forms the connection to the sleeping area. The shelves, drawers, inserts, and sides are fully fitted with a walnut veneer.



PODIUM *live*

Furniture coated and satined surface.
Cover and back wall from enameled Acilux glass.

Custom-made bathrooms best express everything you could hope to get from the most private room of the house.
The sinks, which are covered with quality Acilux fiberglass with dark green enamel, rest on a double drawer element that serves as the support.

A LeCorbusier-style lounge was integrated for reading a book after or while bathing.
The mirror has an illuminated frame and is custom-made for this solution. It also offers radio and heater controls. All nooks make excellent use of the space.





Live me,
Penthouse

*The marvellous '70s
Interpreted with taste.*

*The marble, protagonist
of the project, offers stylish
ideas for every room of
the home.*

*Live me,
'70 emotions*

Live me,
'70 emotions







Since always, Podium looks at the future, trying to be innovative in every field, adopting cutting-edge technology before others, that could offer remarkable improvements for the final consumer, in respect of the surrounding environment. Powder painting is an example: renowned in the metal industry,

it is instead a novelty for the wood sector. Podium has adopted this technology because it ensures top quality standards, duration of the products and stability in time. Podium Research & Development team focused on shock-resistance, adopting for example the long-lasting and anti-scratch embossed lacquering technique,

easy to clean and particularly repellent to dirt. In particular, we notice Estatuario Black shiny marble top, worked and assembled in order to obtain a continuity effect between the top and the lateral shim. Great handicraft skills.

Live me, '70 emotions



Love&Nature apartment +360 m²

Luxury apartment: A floor with view lake view, 360 m², walnut, oak, and countertops with black onyx, and a characteristic style that combines the natural Sahara color throughout the house with matt surfaces. Whether in the kitchen, storage space, guest room, office, or bathroom, the color concept runs through all of the rooms. Traditional craftsmanship and design: every detail has been worked out meticulously. The house becomes a refuge and lives up to its expectations.

Live me,
Parco





The artistic beauty of the high-quality furniture made from Swiss walnut is found in every single product and all creations of Podium Industries. We have been bringing the art of interior design into private and large apartment complexes throughout Switzerland for forty years. Interpretation, poetry, respect, and love for the material are elements that have invigorated our work ever since.

This inspiration comes from the sensory notes that the wood transmits to us. Fragrances and colors accompany us in our artistic work and expert hands give shape to linear, architectural plans. Our kitchens and furnishings are designed to not only look good, but to be invitingly warm, lived in, and invigorated by the correct organization of functions, the recycling of materials, and the

careful definition of every detail. The skilled hands of experienced wood artists create a unique experience for the people living there.



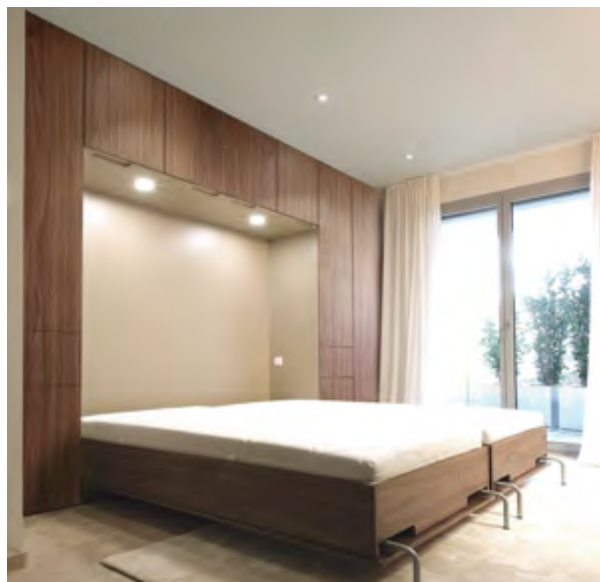


PODIUM *live*

Front in walnut veneer, continuous design.
countertop dark black granite.



Technical room for storage and appliances



This is an all-encompassing solution where everything is carved from the same wood, was planned and defined by the homeowner's architect, and then manufactured by Podium.

The cabinets, which are designed both for the sleeping area and also for the guest room, are made from walnut veneer with continuous graining. In the guest room, the beds can be lowered from the wall unit

when they are needed.

This also applies to the office area on the other side where the countertop is hidden between a folding front and overall has a minimalist design.





The interior design makes the house unique. This custom-made bathroom furniture reflects the personality of the inhabitants of this house with all of its functional and aesthetic elements. This style combines creativity, aesthetics, and the need for new things. When people develop different styles, never before seen unusual combinations are created. These become reality in the Podium live carpentry workshop. The quality and all other advantages of the selected elements are at the service of the residents.



The uniqueness of the project +64 m²

A well-designed layout makes it possible to make more from less.

This living concept is surprising: a shared yet separate day and night area with a large, open kitchen and a separator wall of storage space furniture that makes it possible to separate the functional areas.

Two large verandas, which can be fully utilized, give the small apartment a sense of breadth and an opening to the outside, making it appear larger.

Live me, Cube



It is said that the entrance defines the house. After all, it gives guests an initial impression of how life is lived in the house. The entrance area affords hosts an opportunity to welcome their guests in style. An inviting design shows on the one hand the personal touch of the residents and on the other hand makes sure that guests feel comfortable as soon as they enter. Stress and tension stay outside.

You can easily store everything you need conveniently here: shoes, coats, umbrellas, dog leashes, keys, briefcases, backpacks, sports equipment such as skateboards, electric scooters, or a folding bike. This living project offers space for everything, even a custom miniature office found behind the sliding door of the wardrobe: the perfect home-based office.



Live me,
Cube



When it comes to studio apartments, the different functions must fit into a single room. They also call for hybrid and reconfigurable solutions. Thus, the cabinet walls also serve as room dividers. This picture shows the ideal usage of the space arrangement of the hallway, living, sleeping, and bathroom area.



In the open-design room, the architectural separation features the cooking and eating areas. An electrically controlled table turns into a bar, can be slid over the stovetop, or slid open into a table that seats four on wheels that are integrated into the column legs. The parlor with a library makes

the remaining space seem like a unit. The light gray of the walls and ceiling enhance the natural light that enters through the openings on the side.







The sleeping area appears warm and inviting thanks to the natural oak. The focus here is on the canopy bed.
The multimedia area is integrated into a sideboard at the end of the room and storage space for clothes and other items is available next to it. The TV can be slid in and out with a remote control.





Pure aesthetics awaits in the bathroom. Even though only a single room was available, both the bathroom and toilet could be fit in successfully while the back wall of the bed serves as a room divider. This created bookshelves, elements for paper rolls, and the integrated, lighted mirror cabinet. In the bathroom, the wall is covered with veneered wood and real marble. This harmony of the materials is present everywhere in the apartment.



Mini apartment 32 m²

Exclusive concept for using
the available space.

A studio apartment decorated
in Podium live style, where
the interior design solutions
are variably built with
cupboards and shelf walls
to make the best use of the
space. Every convenience
of living is well-defined
here across 32 m².

Through an ideal use of
space, all needs are taken
into account:
cooking and sleeping,
living and relaxing.

Live me,
Mini





Useful room division with furniture. This allows us to gain space in a studio apartment of just 32 m². You need to take into consideration important factors when you decide to go with this type of

interior design. Initially, the overall dimensions of the room need to be determined. Separating a small room can be effective, but every space has its limits. Interior designers must plan intelligently. It is better to choose

fewer material types to achieve smooth transitions. Lighting is another key element. Designers who want to split a room into two areas often only have one window available. This requires cabinetry flooded with light and transparency.

What do you do? This situation requires a consistently thought out and well-planned approach. Nothing may be neglected and all of the space must be considered. 1 The living area has a baby bed with

pullouts, a temporary solution that turns into a comfortable sleeping couch in the future as well as a small, fully functional kitchen with a passage allowing convenient access to the table for serving.

A single window provides sufficient light to the entire room. A wide, open bookshelf divides the sleeping area, which consists of a single bed, a sliding door element, and a wardrobe.

This miniature kitchen fulfills all the needs of those who live there. In order to make optimal use of every inch of the room, the wall cabinets have lift doors on the outside in the parlor and sliding doors on the inside and have pullout shelves in the corners. The oven, refrigerator, and Magic Corner for supplies are located in the tall cabinets. The design makes the room unique with an opening to the living room and with a tabletop at the same height of the countertop in the dining area. This brings the light from the main window into the kitchen. The lifting doors make it easier to remove the dishes. Material: Fenix anti-fingerprint acrylic glass.



Live me, *Mini*





PODIUM *live*

FENIX® antifingerprint laminate fronts.



The children's bed has drawers. It will later turn into an actual bed and grow along with the child, so-to-speak. The pullout element turns into a nightstand for lots of items and clothes with two small bookshelves. The frame turns into a desk. The protective netting can be used as a clothes hanger when stood up. Every installation is integrated and has its fixed, concrete location.





The sleeping area is located behind the bookshelf, depending on the needs and space available with a single or a double bed. It is made from a solid wood headboard with an opal glass window, which divides the bathroom while spreading natural light to all corners of the room. The convenient, low cabinets and tall cabinets covered with mirrors are located to the right of the bed, both with space-saving sliding doors. This makes the entire room appear larger. The oak veneer gives the entire apartment warmth and has been consistently included in all details of the project.





The bathroom furniture is made with the same material selection as the kitchen: laminate in Naples yellow and oak veneer with knotholes. A glass sliding door separates the room from the rest of the apartment.

Office area

Exclusive concept
to combine
technology and
design.

Intelligent solutions
that make you feel
comfortable at
work and at home.
Naturally warm,
ecological materials.

Live me,
*Contract &
Project*







PODIUM *live*

Fronts of the reception office matt acrylic.
Sliding door walnut veneer on plywood, massive embossing plate.
Countertop Richlit® ECO composite panel.



Whoever said that a one-room apartment, a small apartment, a loft, or even an office cannot be designed as comfortably as any larger house? The key is the optimal use of the living space by using furniture that is specially designed and created for this purpose. Podium Industries manufactures special kitchen installations and furniture to maximize the available space and to make the same environment usable at different times of the day for multiple purposes.

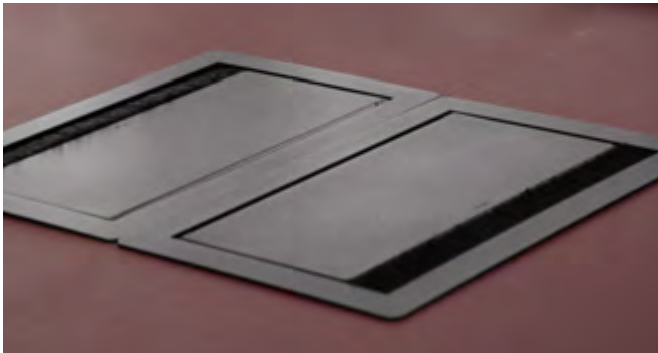
The wardrobe hides the custom-made miniature kitchen intended to welcome the office team or to greet guests with some water or juice at the reception. However, the kitchen can also be used to integrate a full setup, has a sink area, dishwasher, and refrigerator as well as a wall unit for dishes and glasses.



The miniature kitchen has been newly optimized based on acquired experience. It is as unique as the homeowners themselves. Every single element is designed and manufactured with great care down to the last detail. It is ideally suited both for individual users and for large apartment complexes.



Live me, *Contract & Project*



Conference rooms are representative spaces that help to make the working environment more appealing. Every day, the conference room turns into a stage for discussions and meetings. It also turns into a living area that makes it possible to bring together ideas and visions.

For the employees, this work environment is a 360° experience where they do not sit at their desks all day. It is important to give meeting rooms space to offer a certain level of privacy and calm in order to work better in a group. These kinds of kitchen furnishings are vital and at the same time essential for meetings with customers and suppliers.

The meeting room should be inviting while promoting an exchange of ideas and opinions.

The entire room thus contributes to creating the right atmosphere.

This oval table shape is perfectly suited for a rectangular room. The design of the meeting room is extremely important since it shows how we work and also our work environment.

Oval conference table, with integrated electrical connections.
Linoleum on processed plywood. Table leg mirror laminate.
Suspended ceiling spackled metallic with light fixtures.





A room custom-made by Podium must fulfill all functions of welcoming guests to an office. For example, it serves as storage for luggage and clothes, safekeeping for documents or personal belongings, but also as a room for changing or resting. It is a refuge from the work environment, designed for breaks that also can be spent a little differently – such as with yoga.





A motivating and inspiring project. Here, meetings become moments of joy while working together. In today's globally connected world, meetings can also be held via cell phones, just like in this Podium live project. The desire to be able to surprise oneself is the main focus here. Meetings can also take place in a private setting.

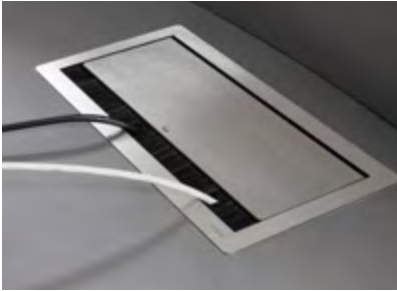


PODIUM *live*

Reception desk coated with matt metallic in titanium and old gold.
Conically arched shape with an integrated workplace each.



Podium live fulfills every wish. With its large portfolio of skills and qualities, the company is equipped for any inquiry: no matter whether it is a company's entrance area, an airport reception and control desk, a conference room or a gym facility. In this case, the design was implemented according to the architect's wishes: a metallic coating with texture. This unique piece is located in a large terminal.





The bathroom is one of the most intimate rooms in which you take time for yourself.

This bathroom furniture combines functionality, convenience, and design.

When it comes to custom-designing bathroom furniture, it is important to have an experienced partner at your side who adds their knowledge, professionalism, and expertise.

The room is meant to fulfill all needs of ergonomic and comfortable design and also become a space for tranquility.

Live me,
Bathroom





When creating its bathroom collections, Podium is convinced that you should let the residents choose how they want to design their personal living space. Like artists who color a canvas, they too should be able to choose from a large variety of elements and combine them to create an ambiance that meets their wishes. The bathroom makes the inhabitants of the house happy every day – and for a long time. After all, they spend a lot of time there. To take optimal advantage of the various possibilities of this space, it is important to select and determine all elements carefully. There are no limits to the imagination.

The bathroom furniture is selected with extreme precision. The focus is on aesthetics and functionality for every single component. For optimal use of space, it is practical and sensible to place the furniture in a floating position.

For smaller bathrooms, modern cabinet elements can be used that are placed on the wall with some distance to the floor in order to make use of the space from the ground up. This lets you move around the room freely without having to worry about bumping into anything. Selecting compact furniture makes it possible to use the available space efficiently. You can store clothes or personal items as needed in the wall cabinet.

These practical and aesthetic modules can be placed directly next to the bathroom vanity. Since they are mounted to the wall, cleaning the floor becomes easier and requires very little effort.

The wall units with mirror fronts make the bathroom appear larger and give the room an undisturbed atmosphere.



Live me,
Bathroom



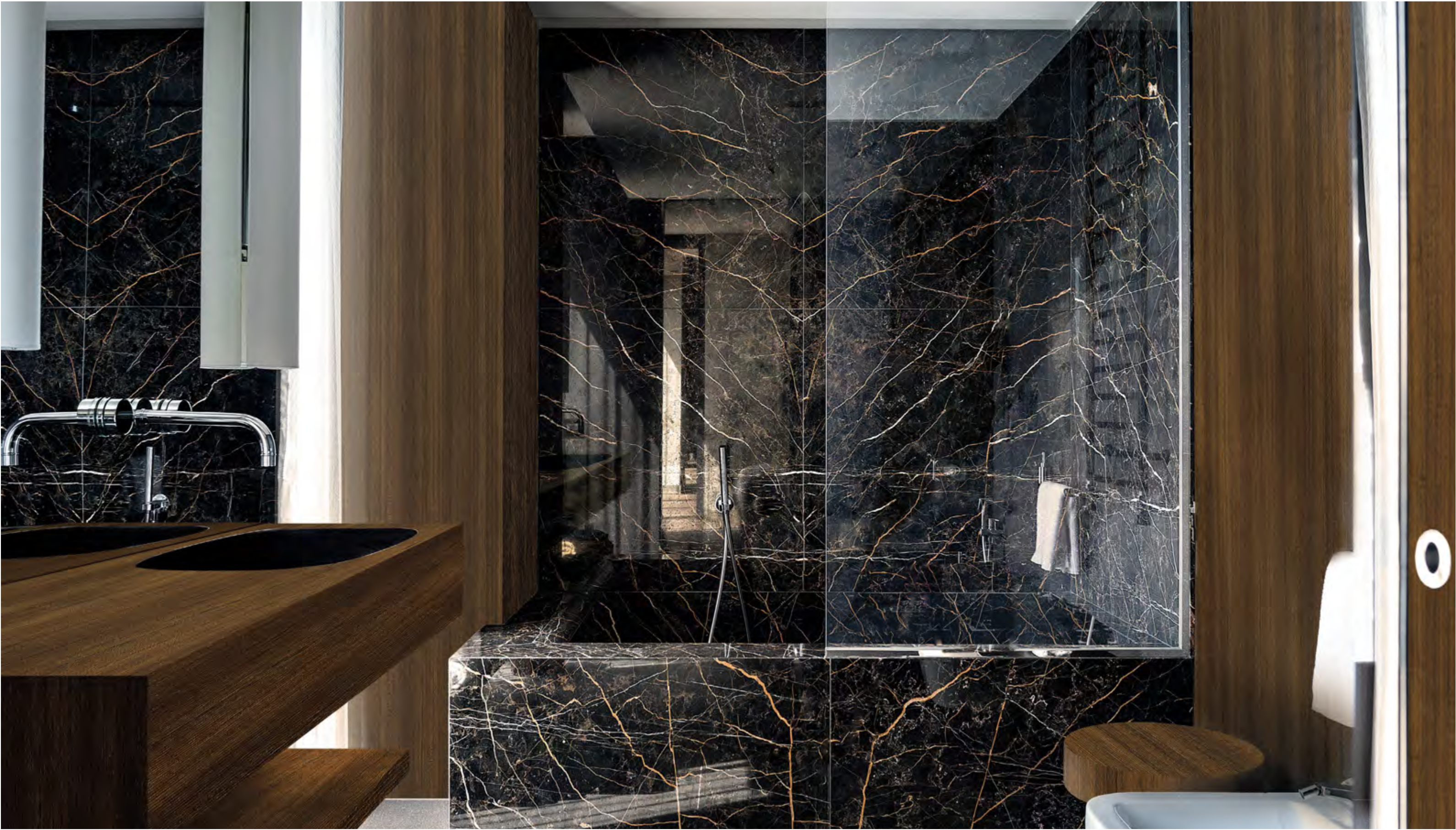


The bottom base, the shelf parts, and the interior of the wall unit are manufactured with an oak surface in a raw cut look. The mirror cabinet opens to a round cutout. This creates lots of space and makes it possible to keep things neat on the inside and outside. The cabinet column on the left has etched glass doors with an aluminum frame that has lighting on the inside. In this picture, the cabinet with stone fronts stands on the bottom base made from shale with four pullouts for your favorite cosmetic accessories or clothes. Bathroom vanity by Laufen. Indirect lighting strip.



Metallic coated fronts, color: opaque anthracite. Material: MDF with milled shell handles. Glass shelf: Acilux enamel, lemon yellow, Galvolux quality glass Alessi/Laufen sinks, KWC water dispenser. On the right-hand side is an open shelf section that is ideal for towels and is painted in a white-grey contrasting semi-gloss varnish. The generous interior of the mirror-fronted cabinet is also designed in white-grey and semi-gloss. Meanwhile, the tall cabinet on the side with a continuous metallic paint front is made from anthracite. It also features a cover with LED lamps.





Design *in Ticino.*

Preface by Adelheid Bernasconi	pg.	6
Essential living Divide the rooms, integrating them	pg.	12
The loft Space customisation	pg.	40
Onda Creative dynamics	pg.	52
Parco Luxury kitchen	pg.	66
Hi-Macs Innovative material	pg.	76
Stone Rock on panels	pg.	86
Diamante Shiny lacquering	pg.	94
Cuore The kitchen away from home	pg.	102
Eco 100% sustainable and recyclable	pg.	108
Cup Antiqued wood	pg.	116
Penthouse apartment +100 m²	pg.	134
'70s emotions Villa on the lake	pg.	162
Parco Apartment +360 m²	pg.	172
Cube apartment +64 m²	pg.	186
Mini apartment +32 m²	pg.	202
Contract & project Offices and public spaces	pg.	214
Bathroom Design bathroom	pg.	232

A history of 40 years of success and experienceand beyond!

Adelheid Bernasconi is the co-founder and director of Podium Industries, together with her husband Edy Bernasconi who also administers and coordinates the furniture production. Assisted by professionals and skilled collaborators, she is the company's leader with regards to Corporate Design, the mood of the collections and interior design projects. She boasts inborn skills in matching colours and

materials in the space available with the furnishing solutions that Podium live proposes in its projects up to transforming trends in necessary home furniture. Adelheid is a design lover, visionary, independent, frequent traveller, she informs herself and founds her resources, she is ready to absorb dynamism, intense stimuli and future trends of Interior Design aesthetic compositions.

She inspired to all of the above to furnish the home solutions proposed in Podium projects in the volume available. Her training began with a diploma in commerce with specialization in Banking, followed by a Diploma as Fashion stylist at FHSfG, in Pforzheim, Germany, with a career as independent Designer.

Design
in Ticino
à la carte

Podium Industries SA
Via ai Ciòss
CH-6593 Cadenazzo

+ 41 91 851 97 20
Info@podiumindustries.ch

www.podiumindustries.ch

Live me.

